

Parent pavilion

The "Spheroid Monolith Pavilion" is located on Stara Planina, Serbia
30 km from Pirot (on the edge of the village of Slavinja)

In the north are Stara planina and Rosomačka reka with Slavinsko Grlo canyon.

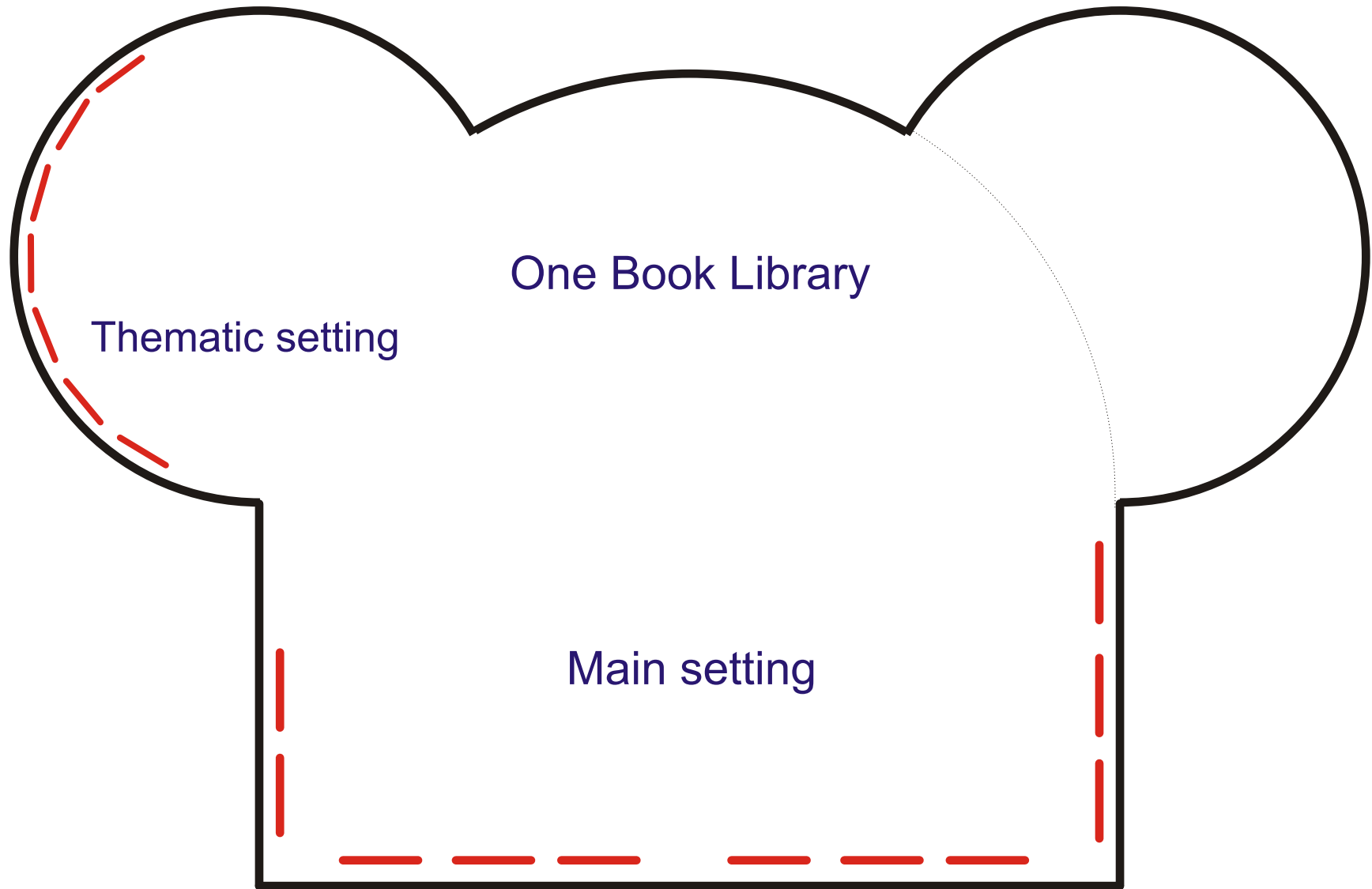
To the south are the Visočica River and the cliffs of the Vidlič plateau.

*

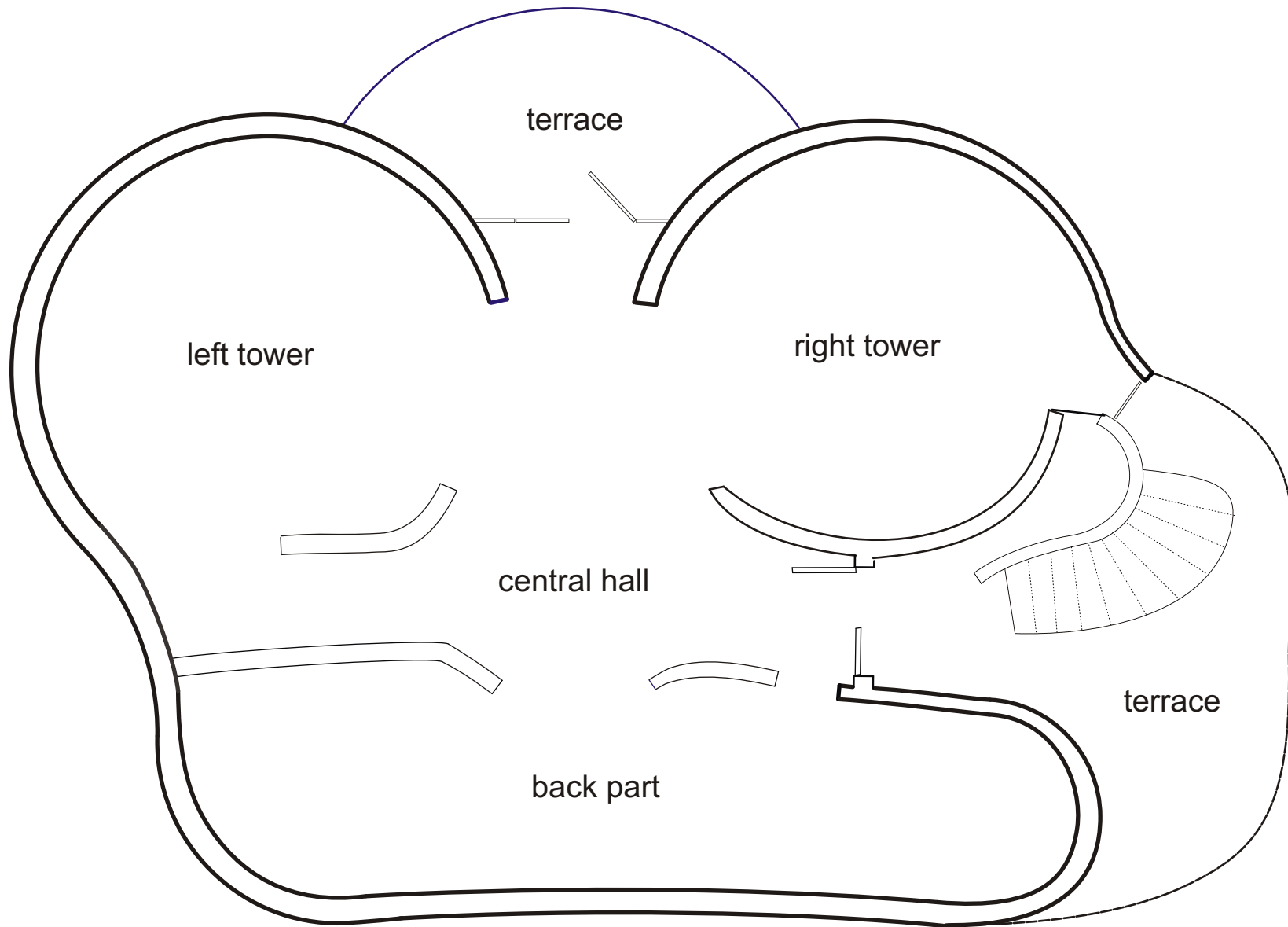
The architectural solution of the pavilion is presented.

The setup is in preparation (followed by recording and posting to the site).

Photos of the interior are provided for illustration purposes,
with a depiction of the natural environment.



Ground floor foundation



Floor plan

Proto Museum

Metaparadigm Standard





OSTEL - Club cafe
Slavinjsko Grlo













